

Maintenance:

Periodically it is recommended to clean the emitters to ensure years of optimum performance. This is a common practice when changing the HVAC filters. To clean the emitters simply, disconnect the power. Remove the CIS product if there is no immediate access to the emitters. The emitters can be cleaned using compressed air, tooth brush or a clean rag to dislodge any accumulated dust. At a minimum this is recommended to be performed annually.

Warranty:

The UVMatrix CIS-12 by Ultravation is provided with a 5 year warranty from date of installation (minimum expected lifetime of product within normal operating conditions). This warranty does not include damage to the unit from accident, misuse or improper installation. If this product should become defective, Ultravation will elect to repair or replace the product free of charge. Ultravation will return repaired or replaced warranted products pre-paid to the customer, provided that the product was delivered pre-paid. Ultravation shall have no responsibilities for charges incurred by the customer for installation or removal of warranted items. Liability is limited only to the replacement or repair of this product. This warranty gives you specific legal rights, and you may also have other rights, which vary from state to state. All returns must be accompanied by a return authorization number, which may be obtained by contacting Ultravation, Inc.

Specification:

Capacity	7-12 tons
Operating Voltage	24,120,208, 240,277 VAC 50/60 Hz.
Power Consumption	24 watts@24 VAC
Total ION Ouput	>640M ions/cc
Material	Galvanized,Steel/ Carbon, probes.
Temp Range	-30-180 deg. F
Humidity Range	0-100% RH
Width	11.5 inches
Height	4 inches
Depth	3 inches
Probe length(x4)	3 inches
Product weight	1.6 Lbs.
Warranty	5 years



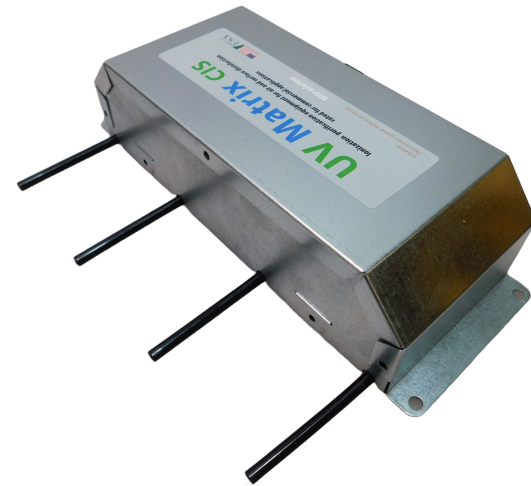
Visit Ultravation.com
to see more variations
(CIS-36 ton model shown)

Ultravation
Better Air | Better Water | Better Living™

67 Tubbs Av, Brandon, Vermont 05733
Phone: 1-866-GO-UV-AIR (468-8247) ■ Fax: 802-287-9203
www.ultravation.com ■ info@ultravation.com
Copyright © 2025 Ultravation Inc.

UV Matrix CIS™

Commercial Grade
Needle point bipolar ionization system



Owner Manual
Installation Guide
Model UV-Matrix-CIS-12

Ultravation®

Better Air | Better Water | Better Living™

Package contents:

- 1 UVMatrix-CIS 12 Ion Generator.
- 1 6 ft. 2 conductor power cord.
- 1 In line fuse.
- 2 duct mounting plates.
- 2 mounting magnets.
- 4 self tapping 3/4" hex screws
- 6 1/4" Phillips head screw for magnet mounting and optional mounting plate
- 4 circular foam gaskets
- 1 multi-tap 24 VAC. transformer 40 VA. 120,240,277 operation.
- 2 wire nuts

Safety precautions:

It is recommended that this unit be installed and maintained by a trained technician.

**RISK OF FIRE, ELECTRIC SHOCK OR INJURY
THIS PRODUCT MUST BE INSTALLED WITHIN THE HVAC
SYSTEM OR DUCT WORK.
THERE ARE NO USER SERVICEABLE PARTS
DISCONNECT POWER WHILE INSTALLING OR SERVICING THIS PRODUCT.
NOT INTENDED FOR OUTDOOR USE**

Electrical requirements:

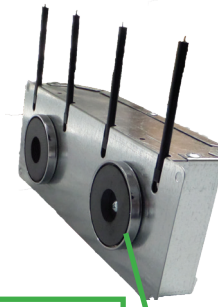
This product operates on 24 VAC
It is recommended to connect to the supplied dedicated transformer.

Determining installation:

The CIS series Ion Generator is uniquely designed to be installed either internally or externally to most HVAC systems. External mounting is typically done when metal return ducting is present.
Installing the CIS-12 prior to any system filtration ensures that any charged particulate matter will collect into the HVAC filter.
The CIS system may also be installed internally on most furnace and air-conditioning systems.
Take all installation and equipment variables into consideration when determining the final installation point.

Unique adaptable design allows for installation
pre-filtration or post or both

Utilizing 2 units allows for greater coagulation effects essentially increasing the MERV rating of filtration, while allowing for uninterrupted air purification. As most filters are electrostatic and cancel out the ionization field during the sterilization process

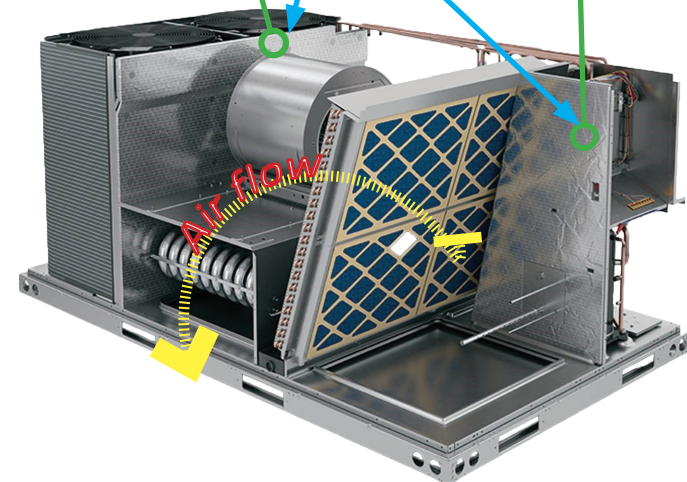


Using the magnet mount option
The CIS12 releases millions of ions per second into the air-stream disinfecting the air of potentially harmful pathogens.



Pre filtration allows for the coagulation of micro particulates that would normally pass through filtration

This application also sterilizes filtration for maintenance purposes



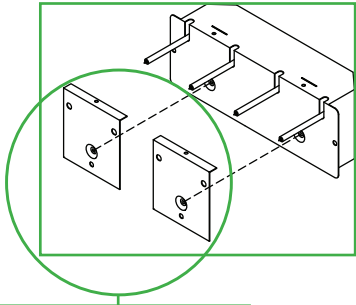
Installation steps:

Step 1 Location

Disconnect power and shutdown the system while installing or maintaining the product.

Pre- Filter installation:

Determine mounting style (orientation of emitters see previous page).
Rotate the emitters as necessary.
if mounting externally use included sealing plates.(See below).
Affix plates with supplied 3/4" hex screws.
If mounting internally use supplied magnets.



Optional VXP racking (sold separately) can be used for any internal mounting, especially in cases where multiple units are used. P/N VXP-120.

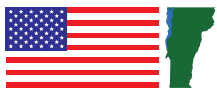
Sealing plates used for external mounting

Post Filter installation:

Determine mounting style (orientation of emitters see previous page).
Rotate the emitters as necessary.
if mounting externally use included sealing plates.(See below).
Affix plates with supplied 3/4" hex screws.
If mounting internally use supplied magnets.

Once a suitable location has been established used the supplied screws to mount the CIS system in place

Ultravation products are manufactured and assembled in the Green Mountain State of Vermont.
Please visit ultravation.com to learn more.



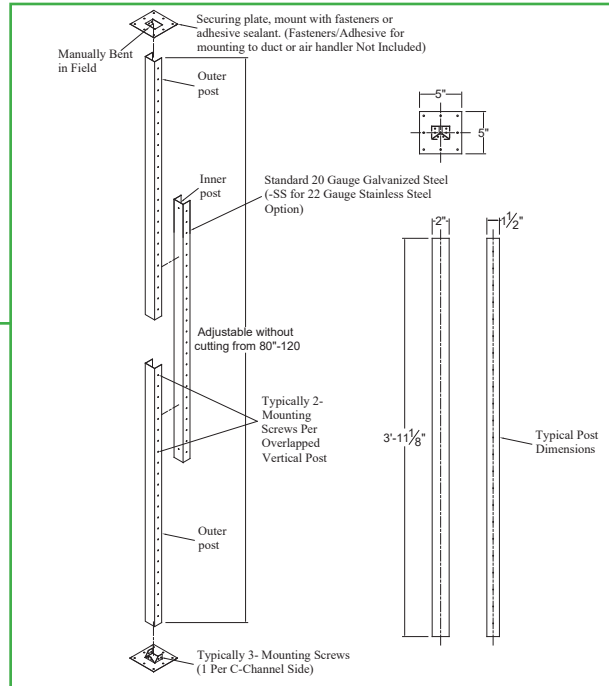
Ultravation
Better Air | Better Water | Better Living™

EPA establishment number : 074725-VT-001

Installation steps:

Step 2 Power

Using the supplied transformer or recognized equivalent make the appropriate electrical connections note the CIS system operates completely on low voltage 24 Vac ! Do not connect directly to line voltage.

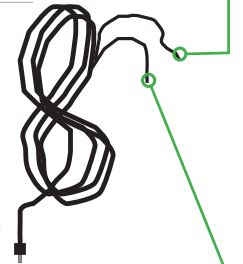
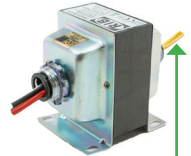


Optional VXP-120 rack for mounting

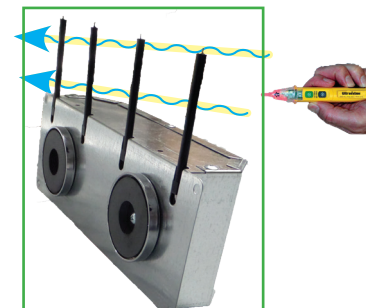
Step 3 Power

Connect power leads to transformer.
Plug the cord into the CIS.
Reconnect main power System is active
Notice the operation of the LED on the CIS

PRIMARY WIRES	SECONDARY WIRES
Brm - 277 Vac	Yel/Wht - 24 Vac
Org - 240 Vac	
Red - 208 Vac	
Wht - 120 Vac	
Blk - Comm	Yel - 24 Vac



AC Leads connect to yellow wires. Polarity does not matter.



Individual operation can also be determined by using a non conductive test tool. place the tool near the energized emitter, the tool will light or beep indicating power

Regardless of the installation be sure to allow the airflow to go across the probes evenly as to prevent the ions from prematurely recombining in the atmosphere or canceling out the effect.